



# Official 2023 Player Program Caddy Book

**Call or Text Questions:**  
**(414) 484-5803 – General Info**  
**(920) 629-9997 – Officials/TD**

**More Info:**

**[www.silvercupdiscgolf.com](http://www.silvercupdiscgolf.com)**

**Spectator Info: [www.discgolfmanitowoc.com](http://www.discgolfmanitowoc.com)**

**Email: [discgolf@discoverwisc.com](mailto:discgolf@discoverwisc.com)**



## Sponsor List (call to thank them...)

Bank 1st National	920-652-3274	bankfirstnational.com
Cedar Crest Ice Cream	800-682-5577	cedarcresticecream.com
Confluence Graphics	414-962-7000	confluencegraphics.net
Cool City Spas	920-794-8321	royalkitchensandbaths.com
DEW Disc Golf	920-629-9997	discoverwisc.com
Discraft	248-624-2250	discraft.com
Evergreen Disc Sports		
EZ-GO Golf Cars	920-629-1349	
Flight Towel	971-218-7579	flighttowel.com
Flying Fortress	920-540-3107	
Hartman's Greenhouse	920-683-2123	hartmansgreenhouse.com
John Van Lanen		
La Carreta Mexican	920-686-0414	lacarretamanitowoc.com
Lakeshore Auto Glass	920-458-4631	lakeshoreautoglass.com
XPAND Disc Golf		
Lighthouse Inn	920-793-4524	lhinn.com
Mtwc Area Vis & Conv Bureau	920-686-6071	manitowoc.info
Manitowoc Parks & Rec	920-686-3580	manitowoc.org
Manitowoc Trophy	920-684-7318	manitowoctrophy.com
MVP Disc Sports		mvpdiscsports.com
Paige Pierce		paigepierce.com
Rollin' Ridge DGC	920-740-7308	rollinridge.com
Scott's Vending	920-451-9820	scottsvending.net
Andrew Stephan		The Musicman
The Fitness Store	920-684-8088	thefitnessstore.com
Throwing Art (John Dorn)	920-419-0582	throwingart.com
University BP	920-973-5661	popppenterprises.com
Upper Park Disc Golf		upperparkdiscgolf.com
Visual Eclipse Productions	414-559-4687	visualeclipseproductions.com

## JUNGLE CHRYSLER - Registration Refund ACE RUN

Like eminem says, "You only get one shot" so Ace Ridge hole 16 on Saturday. 1st ace wins a refund of your registration. No aces and the Advanced winner moves up next year FREE.

## TEE OFF AREAS (check-in 20 minutes prior to your tee time)

Creekside	Hole 14	Check-in at Hole 14
Lakeside	Hole 19	Check-in at Concession
Super Silver	Hole 20 (Super 1)	Check-in at Concession
Ridge	Hole 1	Check-in at Pro Shop

## Silver Cup Sponsors



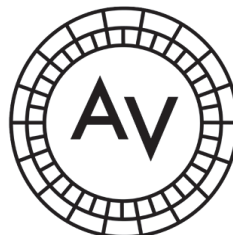
VISUAL eclipse



PRODUCTIONS LLC



FULL LINE VENDING  
Two Rivers, WI  
920-793-4171



SILVER CUP XXIII

### Course Layout (Ams)

[illegible]



# Schedule

Friday, July 21, 2023

<http://dgscene.com/silveram>

10:00am Practice rounds, early player packs  
- 5:30pm noon-5:30pm & flex start singles event (C-tier ran by JRay from DD)

Saturday, July 22, 2023

8:00am (A Pool - Advanced Divisions) Round One Ridge - Tee Times start, Check-in at the clubhouse  
- 11:10am Tee Times will be posted at  
<https://www.pdga.com/tour/event/68068>

8:00am (B Pool - Intermediate Divisions) Round One Creekside - Tee Times start, Park in Upper Parking Lot near Tee 14  
- 11:10am Tee Times will be posted at  
<https://www.pdga.com/tour/event/68068>

8:00am (C Pool - Rec, Novice, Juniors) Round One Lakeside - Tee Times start, Park in Lower Parking Lot near Tee 19  
- 11:40am Tee Times will be posted at  
<https://www.pdga.com/tour/event/68068>

12:00pm (C Pool - Rec, Novice, Juniors) Round Two Creekside - Tee Times start - 4 Hours after 1st round, Park in Upper Parking Lot near Tee 14  
- 3:40pm

12:00pm Lunch offered on-site at Silver Creek  
- 4:00pm Enchiladas OR Italian Pasta

12:30pm (A Pool - Advanced Divisions) Round Two Lakeside - Tee Times start - 4.5 Hours after 1st round, Park in Lower Parking Lot near Tee 19  
- 3:40pm

12:30pm (B Pool - Intermediate Divisions) Round Two Ridge - Tee Times start - 4.5 Hours after 1st round, Check-in at the clubhouse  
- 3:40pm

7:00pm No Awards ceremony for C Pool (Check on-line for results)

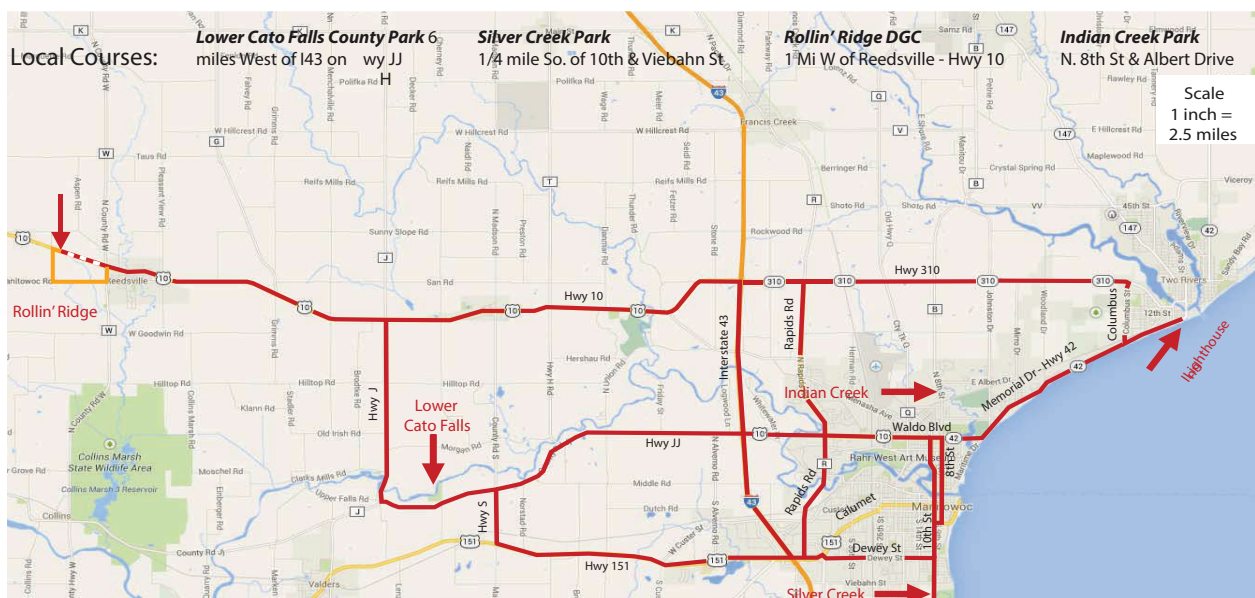
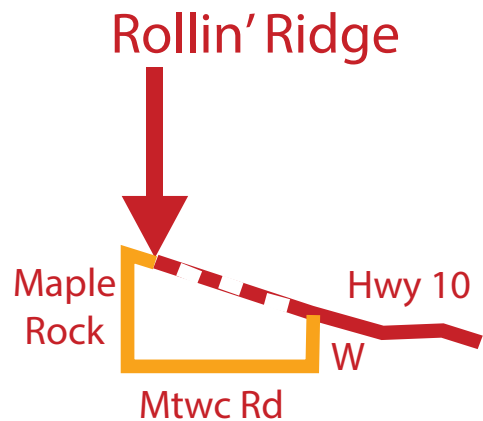
Sunday, July 23, 2023

7:30am (A/B Pool - Advanced, Intermediate ONLY) Round Three - Tee Times start, Super Silver 18 layout - Park in Lower Parking Lot near Tee 20  
- 3:20pm Tee Times will be posted at  
<https://www.pdga.com/tour/event/68068>

6:30pm No Awards ceremony for A/B Pool (Check on-line for results)

## DETOUR

**To Ridge From 10 West**  
Take Highway W South out of Reedsville from Hwy 10 W, go West on Manitowoc Road, then North on Maple Rock Road and East on Hwy 10.



**BREATHTAKING LAKE MICHIGAN VIEWS**  
**HOTEL - RESTAURANT - BAR AND BANQUET**  
**LHINN.COM 800-228-6416 TWO RIVERS, WI**



**LIGHTHOUSE INN**

# Directions

## Courses

<b>Silver Creek Park</b>	3001 S. 10th St Manitowoc *1 block South of Viebahn St
Lower Cato Falls County Park	6 miles west of Interstate 43 on Hwy JJ Manitowoc
Rollin' Ridge DGC	10315 Hwy 10 *1 Mile West of Reedsville

## Lodging

<b>Lighthouse Inn</b> *Host Hotel	<b>920.793.4524</b> <b>800.228.6416</b>
AmericInn	920.684.3344
Best Western	920.682.7000
Holiday Inn	920.682.6000
Quality Inn	920.683.0220
Super 8	920.684.7841
Village Inn	920.794.8818

## Area Info

<b>Manitowoc Area Visitor &amp; Convention Bureau</b>	<b>920.686.3070</b> <b>Manitowoc.info</b>
Camping and General Q's	920.629.9997

COOL GOOGLE MAP <http://goo.gl/maps/0lcBD>

**Call Today**  
**920.629.9997**

## Featured Disc Golf Course Supporters

**Spots Available**

University BP	John Van Lanen	The Fitness Store
Bank First National	Flying Fortress	Andrew Stephan



# LIGHTHOUSE INN

## ON LAKE MICHIGAN



A warm nautical decor enhances our spacious guest rooms plus wireless internet, refrigerators, coffee makers and cable TV with HBO & ESPN.

Rates Starting at ... \$109 plus tax



Large panoramic windows span our lakefront dining room and lounge providing a relaxing atmosphere. Full service breakfast, lunch and dinner. Cocktail lounge and meeting space.

Restaurant Hours:  
Monday - Sunday 7:30am - 7:30pm  
Frequent diner discounts offered.



CARRY-OUT MENU  
[www.menu.lhinn.com](http://www.menu.lhinn.com)

[www.lhinn.com](http://www.lhinn.com)  
[rooms@lhinn.com](mailto:rooms@lhinn.com)



# Silver Creek Info

## **OUT OF BOUNDS / General**

Anywhere in the creek or Lake Michigan, on concrete or blacktop

“completely surrounded and beyond” are OB - Tee pads are NOT OB

Casual water NOT OB in fairway unless marked (move straight back to a safe lie)

Gravel roads are NOT OB except as marked by paint on holes 2, 5 & 34

### **Mandatories - Holes 3, 9, 12, 23, and 32 (SS Holes 4, 12, 16, 17)**

Throwing past the mandatory line on wrong side, re-tee from short tee with one stroke penalty. If out of bounds occurs past mandatory line on the wrong side, mandatory penalty overrides OB penalty. (Hole 12 missed mandatory, re-tee with stroke, second and repeat occurrences, re-tee from short tee with stroke.)

**CHAMP TEES: 2, 3, 13, 20, 21, 34 (SS Holes 1, 2, 9, 12, 18)**

OB paint on #2 - OB Road on #3 (blacktop)

OB Blacktop and manholes on #4 - OB Parking lot and road on #11

OB LEFT OF FAIRWAY with paint on #s 10&11

**(Construction site on 11 is OB)** - OB Road on #12

OB Blacktop parking lots on #13 and 14

OB paint along top of creek bed on #14 green

OB paint along gravel on #5 & 34

OB Road on #35-36

*MA1, MA40 play champ tees.*

*FA1, MA50-60, MA2 & FA2, MA3 play long tees - no champ tees.*

*FA3, MA4 MJ15 MJ12 play short tees.*

# Rollin' Ridge Info

## **OUT OF BOUNDS**

All water on hole 1, 2 and 18 (hole 2 drop zone = orange short pad)

Except stream on hole 1 played as casual water between & under the bridges

Right side of 3 at the 1st lawn mower cut marked with flags

**NO OB on hole 4**

**MANDATORIES** - Holes 7, 8 & 9, 17 – white sign (retee from orange tee on 7 & 17, retee from red tee on 8 & 9 - one stroke penalty)

## **OTHER**

**All divisions play to the same red basket locations**

Foul Line - must be completely behind at time of release (see rule

8.02.01B) All Tee Pads – front line is “before” the 4 foot run off (not on top of the line) Check-in at the score keepers table before and after your round

Tournament disc sales and raffle will benefit the payout

Greens fees are optional – donations accepted in the outside slot by pro shop

Mosquito spray located near hole 1 on the deck

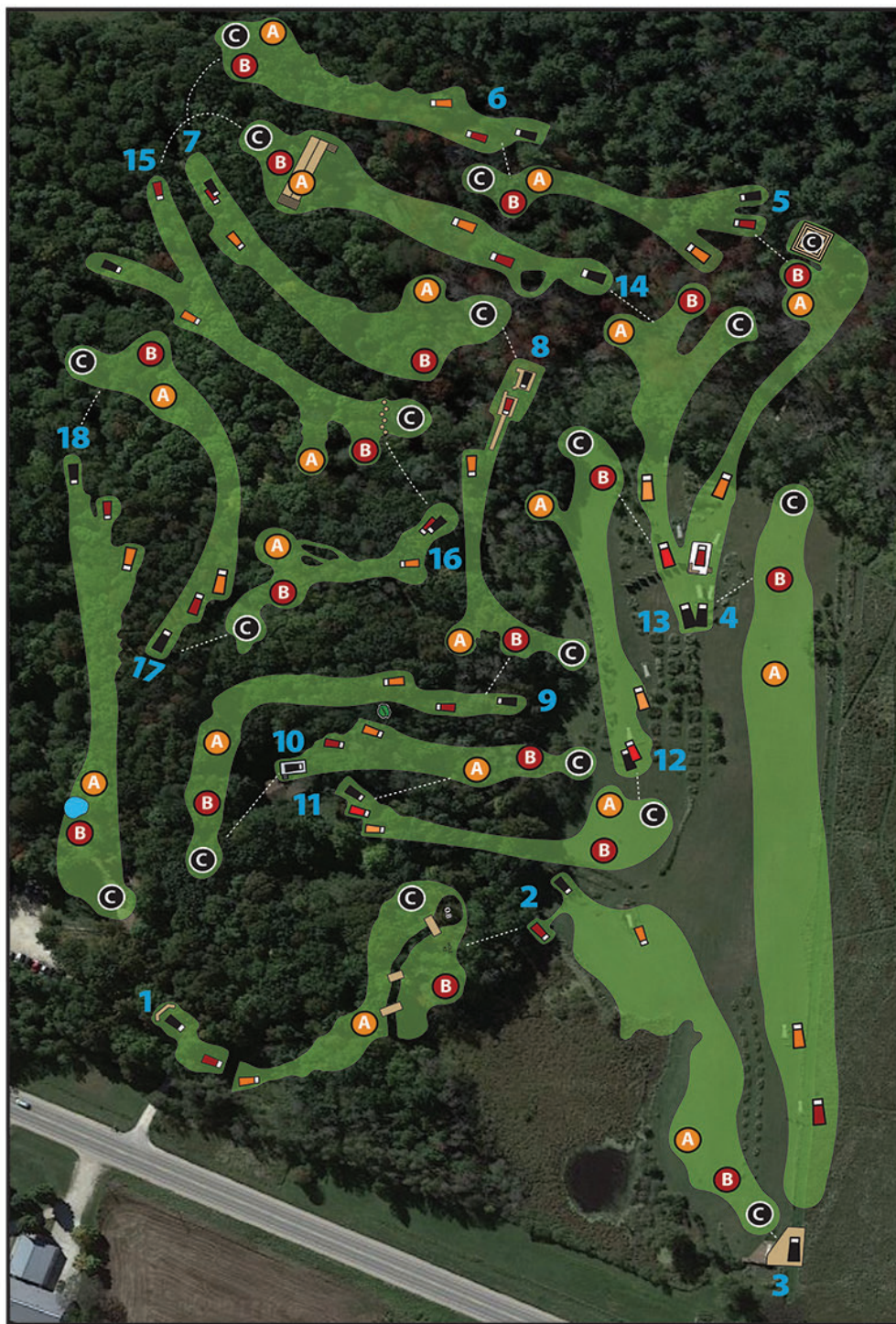
**ADVANCED play RED tees, INTERMEDIATE play ORANGE tees.**





# Rollin Ridge

DISC GOLF COURSE



## BLACK - LONG TEES

	PIN A	PIN B	PIN C
1	3 373	4 445	4 512
2	3 393	4 471	4 558
3	4 756	4 895	5 1005
4	3 400	4 448	4 510
5	3 308	3 358	4 420
6	3 365	3 362	3 400
7	3 358	4 413	4 457
8	3 390	3 399	4 468
9	4 452	4 533	5 583
10	3 290	3 334	3 397
11	3 313	3 327	3 375
12	3 361	3 415	3 449
13	3 399	4 434	4 417
14	3 373	3 396	4 430
15	3 401	4 447	4 476
16	3 217	3 231	3 276
17	3 345	4 432	4 497
18	4 504	5 616	5 731
57 6998		63 7956	70 8961

## RED - MIDDLE TEES

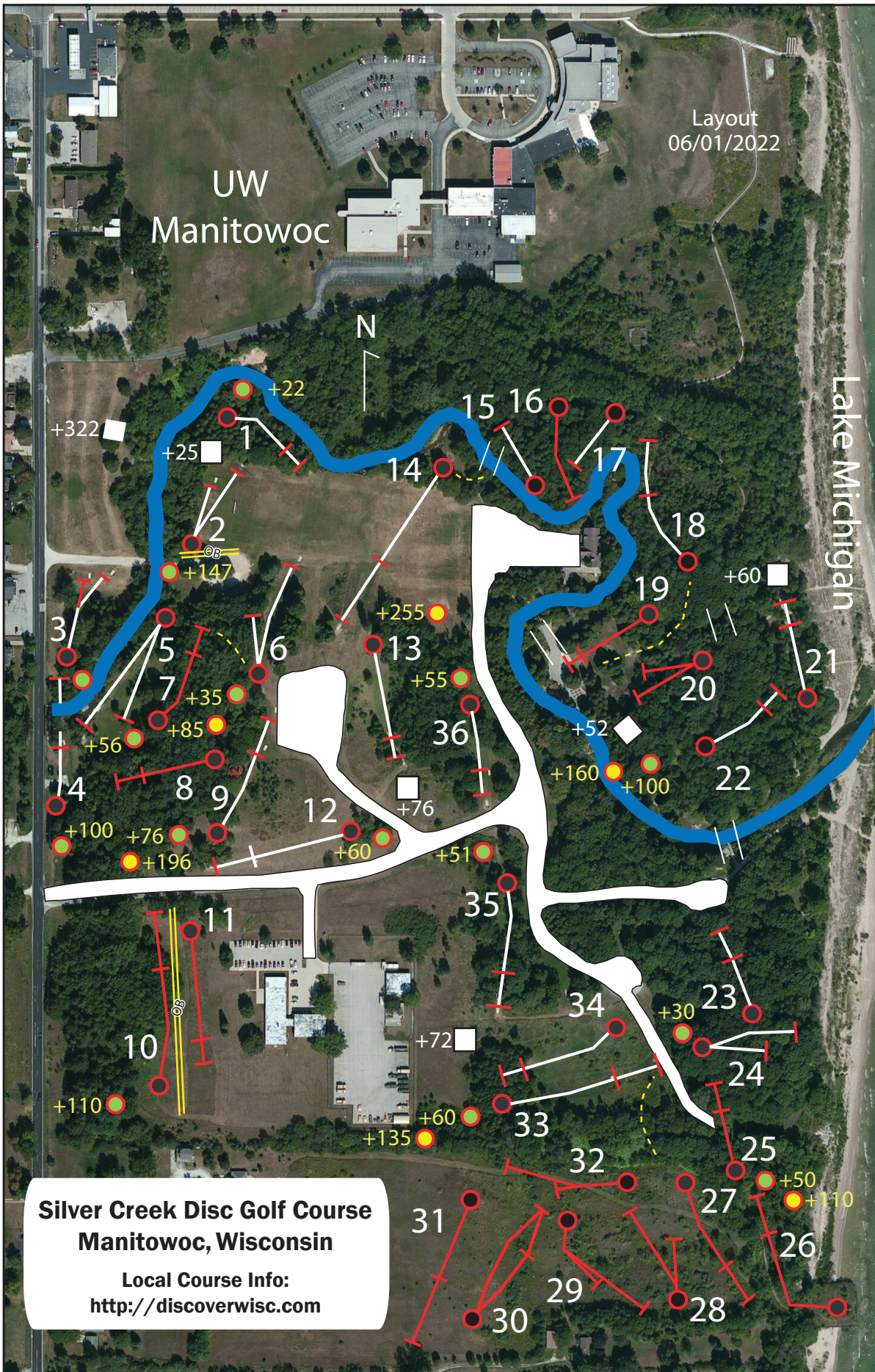
	PIN A	PIN B	PIN C
1	3 310	3 378	4 443
2	3 298	3 401	3 485
3	4 577	4 718	5 823
4	3 333	3 380	3 440
5	3 283	3 333	4 395
6	3 294	3 291	3 329
7	3 358	4 413	4 457
8	3 331	3 340	4 401
9	4 337	4 418	5 468
10	3 229	3 273	3 336
11	3 295	3 309	3 357
12	3 361	3 415	3 449
13	3 306	3 341	3 324
14	3 297	3 320	3 354
15	3 382	4 427	4 455
16	3 217	3 231	3 276
17	3 264	3 354	4 420
18	3 394	4 506	5 621
56 5866		59 6848	66 7833

## ORANGE - SHORT TEES

	PIN A	PIN B	PIN C
1	3 257	3 326	3 397
2	3 251	3 338	3 416
3	3 479	4 619	5 726
4	3 200	3 273	3 333
5	3 208	3 258	3 320
6	3 239	3 236	3 274
7	3 298	3 353	3 397
8	3 205	3 214	3 277
9	3 290	3 371	4 421
10	3 205	3 249	3 312
11	3 251	3 265	3 313
12	3 287	3 341	3 375
13	3 228	3 263	3 246
14	3 232	3 255	3 289
15	3 236	3 282	3 311
16	3 155	3 169	3 214
17	3 243	3 334	3 400
18	3 304	3 414	4 531
54 4568		55 5560	58 6552

CLASSIC COURSE	HOLE PAR	1	2	3	4	5	6	7	8	9	10	11	12	13	14	15	16	17	18	Total
ORANGE TEE																		243		
RED TEE		378		718	440	333			401	468	273	309		306	320	455			621	7239
BLACK TEE			471				400	457					415				231			





Layout  
06/01/2022

UW  
Manitowoc

Lake Michigan

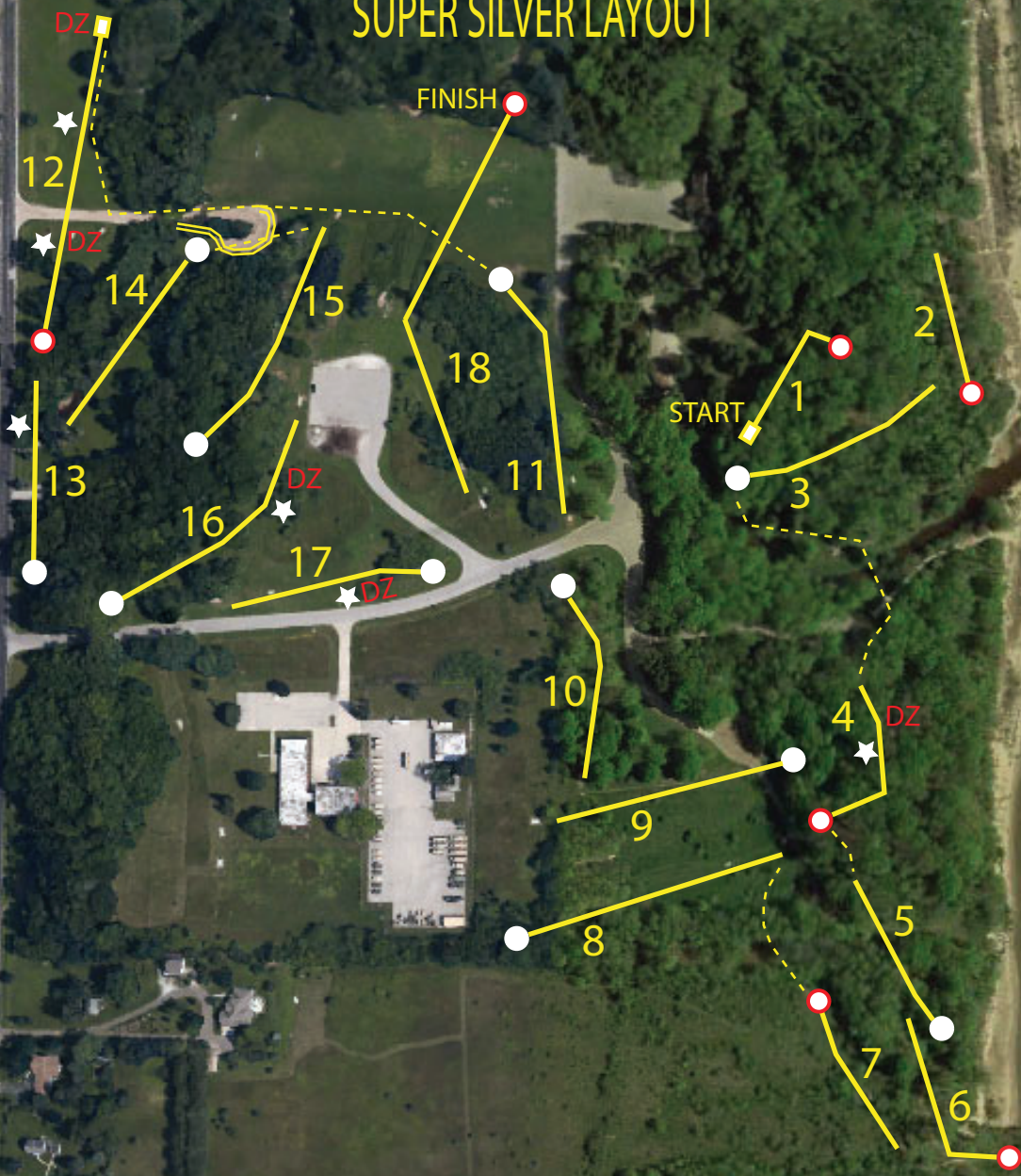
**Silver Creek Disc Golf Course  
Manitowoc, Wisconsin**

Local Course Info:  
<http://discoverwisc.com>

		Short Tees			
Hole	Par	A	B	C	
1	3	148	170		
2	3	147			
3	3	200			
4	3	142	242		
5	3/4	205	352		
6	4	146	181	231	
7	3	200	256		
8	3	150			
9	3/4	233	309	429	
10	4	290	400		
11	3	270			
12	3	248	323		
13	3	245			
14	4	288			
15	3	160			
16	3	225			
17	3	170			
18	3	190			
Front	59	3657	4278	4448	
19	3	192			
20	3	150			
21	3	154			
22	4	205	305	365	
23	3	160			
24	3	171	206		
25	3	185	235	295	
26	4	335			
27	3	225			
28	3	156			
29	3	184			
30	3	238			
31	3	226			
32	3	184			
33	4	258	318	393	
34	3	238	392		
35	3	242	293		
36	4	172	227	427	
Back	58	3675	4026	4421	
Total	117	7332	8304	8869	
		Long Tees			Champ
Hole	Par	A	B	C	A
1	3	188	210		
2	3	205			230
3	3/4	228	288		610
4	3	244	344		
5	3	308	455		
6	4	318	353	403	
7	3	275	331		
8	3	240			
9	3/4	322	398	518	
10	4	415	525		
11	3	324			
12	3	351	426		
13	3	310			386
14	4	478			
15	3	160			
16	3	225			
17	3	170			
18	3	330			
Front	59	5091	5772	5882	6365
19	3	248			
20	3	198			250
21	3	212			272
22	4	235	335	395	
23	3	245			
24	3	213	248		
25	3	255	305	365	
26	4	450			
27	3	330			
28	3	260			
29	3	285			
30	3	330			
31	3	400			
32	3	306			
33	4	368	428	503	
34	3	298	452		524
35	3	311	362		
36	4	240	295	495	
Back	58	5184	5689	6084	6268
Total	117	10275	11461	11966	12633



SILVER CREEK PARK 2023  
SUPER SILVER LAYOUT



# **confluence** GRAPHICS

- DESIGN & PRINT STUDIO -

- **Digital and offset multicolor printing**
- **Electronic Prepress/imaging**
- **Graphic Design**
- **High-volume Black and White Copying**
- **Business Identity Packages | Brochures**
- **Booklets | Forms | Post Cards**
- **Architectural Plans | Large Format**
- **Full Service Mailing | Bindery & Finishing**
- **Online Ordering**
- **Curbside Delivery | Shipping Available**

**CONFLUENCE GRAPHICS**      265 East Hampton Avenue  
Milwaukee, Wisconsin 53217  
[orders@confluencegraphics.net](mailto:orders@confluencegraphics.net)  
414-962-7000



3535 Calumet Ave. Mtwc  
Phone: (920) 686.0414



1515 Memorial Dr. Two Rivers  
Phone: (920) 793.4524